

HARBOR PLACE

Residences

3 Bedroom / 2 Bath - HP

Apt. #515 | +/- 1,300 sq.ft.



Apartment #: _____

Your Favorite Features: _____

Available Move-In Date: _____

Monthly Rent: _____



Floor plans, square footages and other information are gross, estimated, and approximate for illustrative purposes only - configuration, dimensions, and other information are subject to change without notice. (01.23.17)

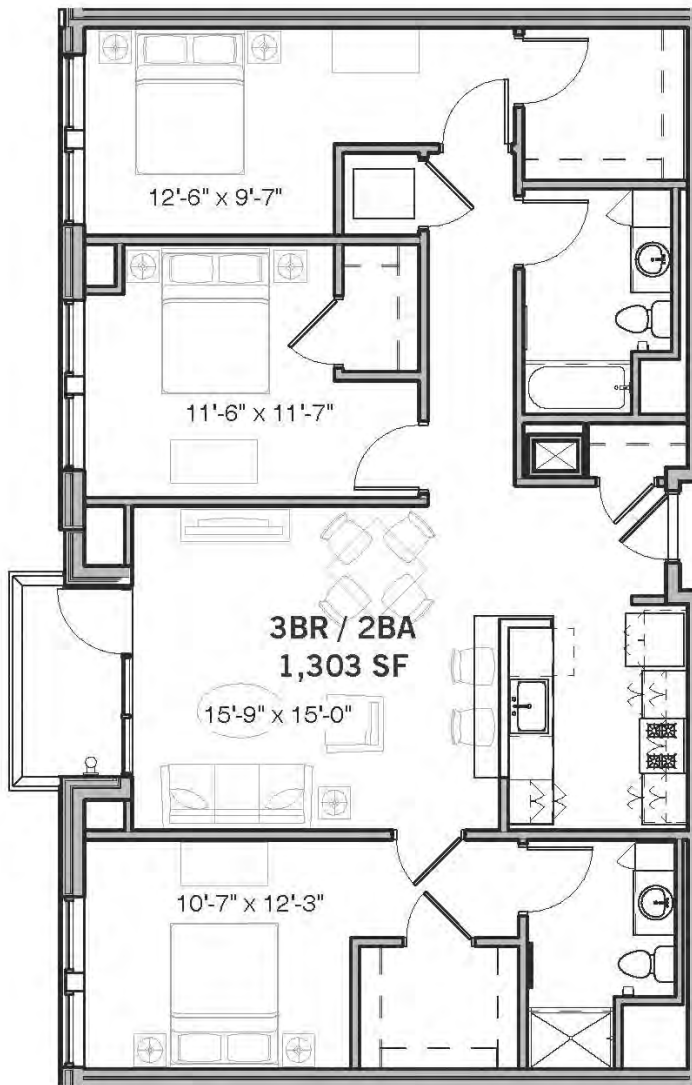
Professionally Managed
& Marketed by:  PEABODY PROPERTIES, INC.

HARBOR PLACE

Residences

3 Bedroom / 2 Bath

Apt. #615 | +/- 1,303 sq.ft.



Apartment #: _____

Your Favorite Features: _____

Available Move-In Date: _____

Monthly Rent: _____



Floor plans, square footages and other information are gross, estimated, and approximate for illustrative purposes only - configuration, dimensions, and other information are subject to change without notice. (01.23.17)

Professionally Managed
& Marketed by:  PEABODY PROPERTIES, INC.