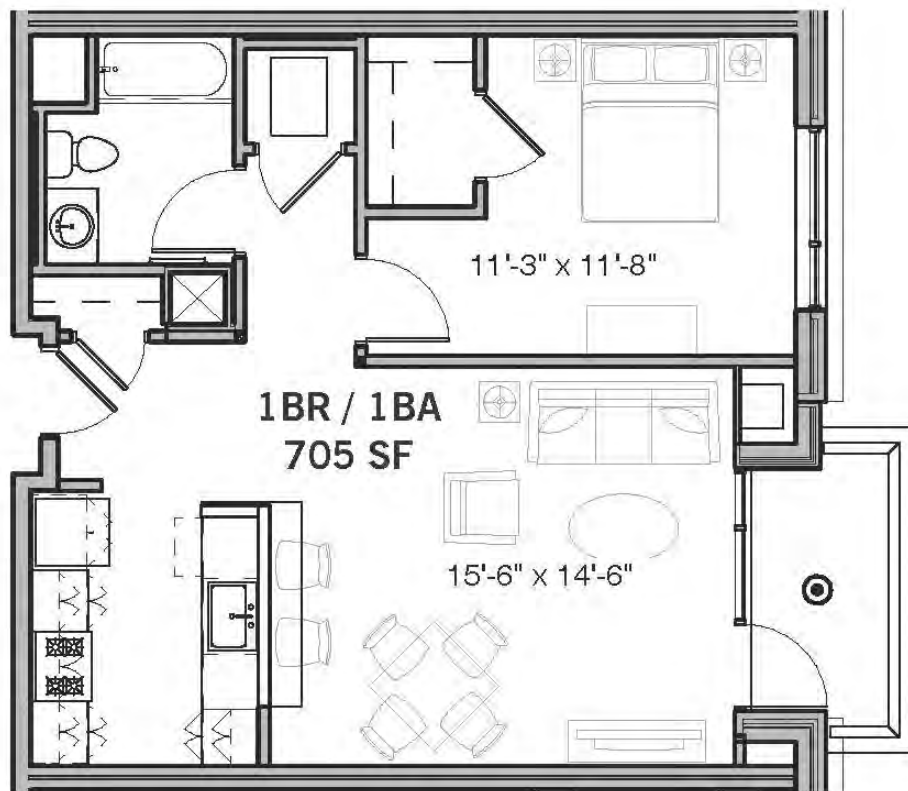


HARBOR PLACE

Residences

1 Bedroom / 1 Bath

Apt. #212, 312, 412, 512 & 612 | +/- 705 sq.ft.



Apartment #: _____

Your Favorite Features: _____

Available Move-In Date: _____

Monthly Rent: _____



Floor plans, square footages and other information are gross, estimated, and approximate for illustrative purposes only - configuration, dimensions, and other information are subject to change without notice. (01.23.17)

Professionally Managed
& Marketed by:

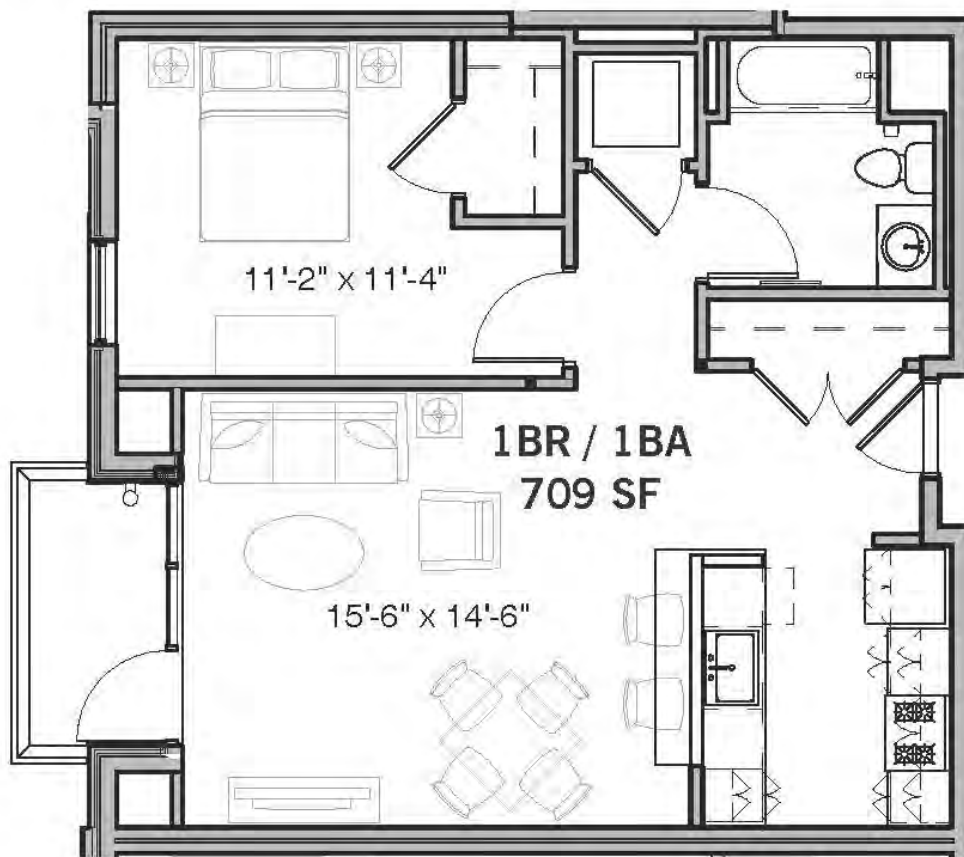


HARBOR PLACE

Residences

1 Bedroom / 1 Bath

Apt. #513 | +/- 709 sq.ft.



Apartment #: _____

Your Favorite Features: _____

Available Move-In Date: _____

Monthly Rent: _____



Floor plans, square footages and other information are gross, estimated, and approximate for illustrative purposes only - configuration, dimensions, and other information are subject to change without notice. (01.23.17)

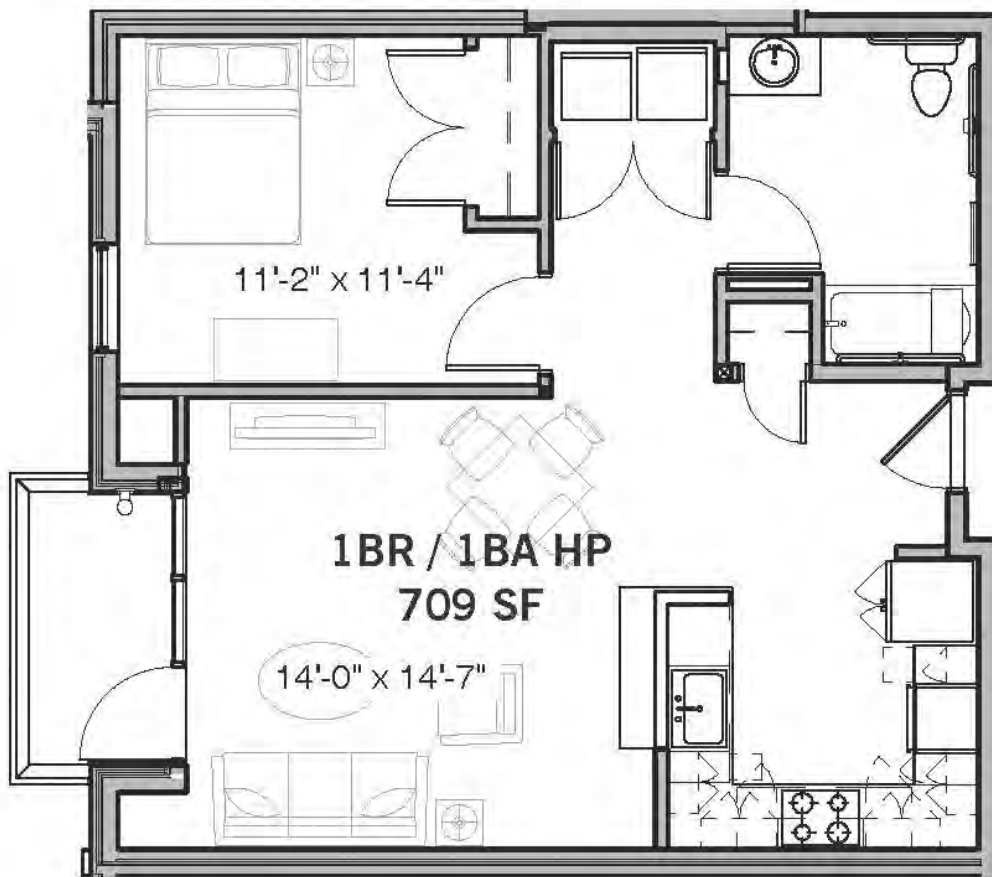
Professionally Managed
& Marketed by: PEABODY PROPERTIES, INC.

HARBOR PLACE

Residences

1 Bedroom / 1 Bath - HP

Apt. #613 | +/- 709 sq.ft.



Your Favorite Features: _____

Available Move-In Date: _____

Monthly Rent: _____



Floor plans, square footages and other information are gross, estimated, and approximate for illustrative purposes only - configuration, dimensions, and other information are subject to change without notice. (01.23.17)

Professionally Managed
& Marketed by:



HARBOR PLACE

Residences

1 Bedroom / 1 Bath

Apt. #215, 315 & 415 | +/- 710 sq.ft.



Apartment #: _____

Your Favorite Features: _____

Available Move-In Date: _____

Monthly Rent: _____



Floor plans, square footages and other information are gross, estimated, and approximate for illustrative purposes only - configuration, dimensions, and other information are subject to change without notice. (01.23.17)

Professionally Managed
& Marketed by:

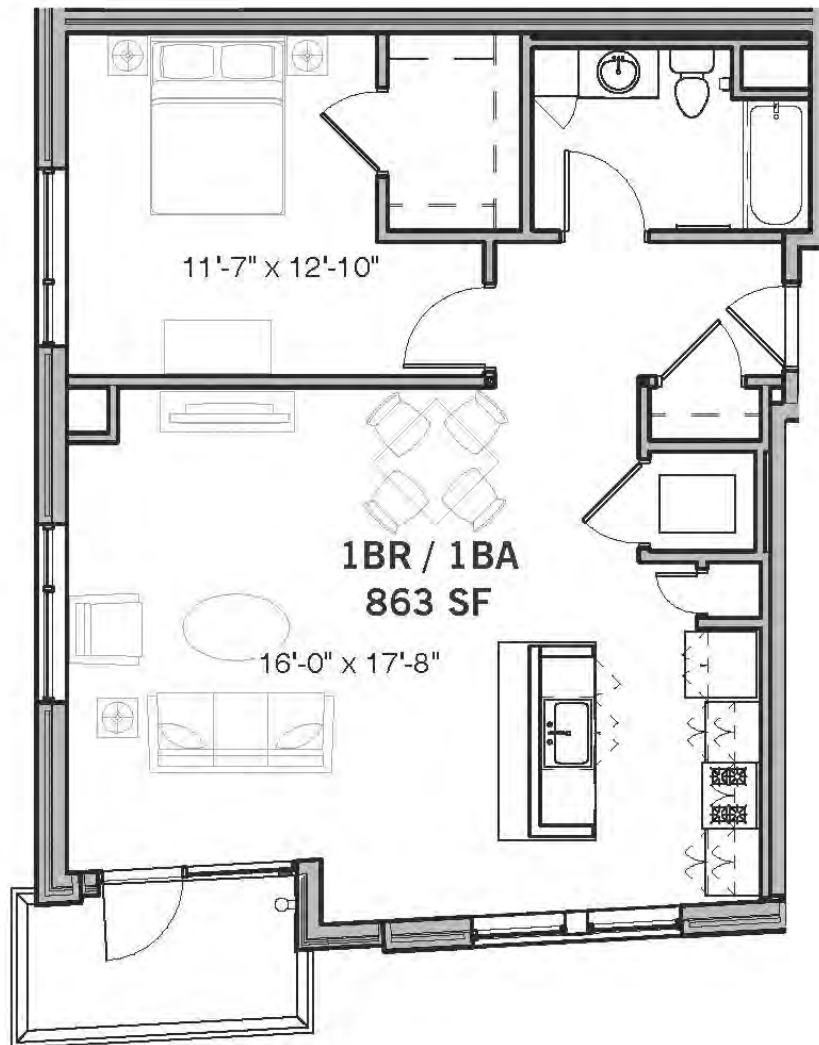


HARBOR PLACE

Residences

1 Bedroom / 1 Bath

Apt. #517 & 617 | +/- 863 sq.ft.



Apartment #: _____

Your Favorite Features: _____

Available Move-In Date: _____

Monthly Rent: _____



Floor plans, square footages and other information are gross, estimated, and approximate for illustrative purposes only - configuration, dimensions, and other information are subject to change without notice. (01.23.17)

Professionally Managed
& Marketed by:

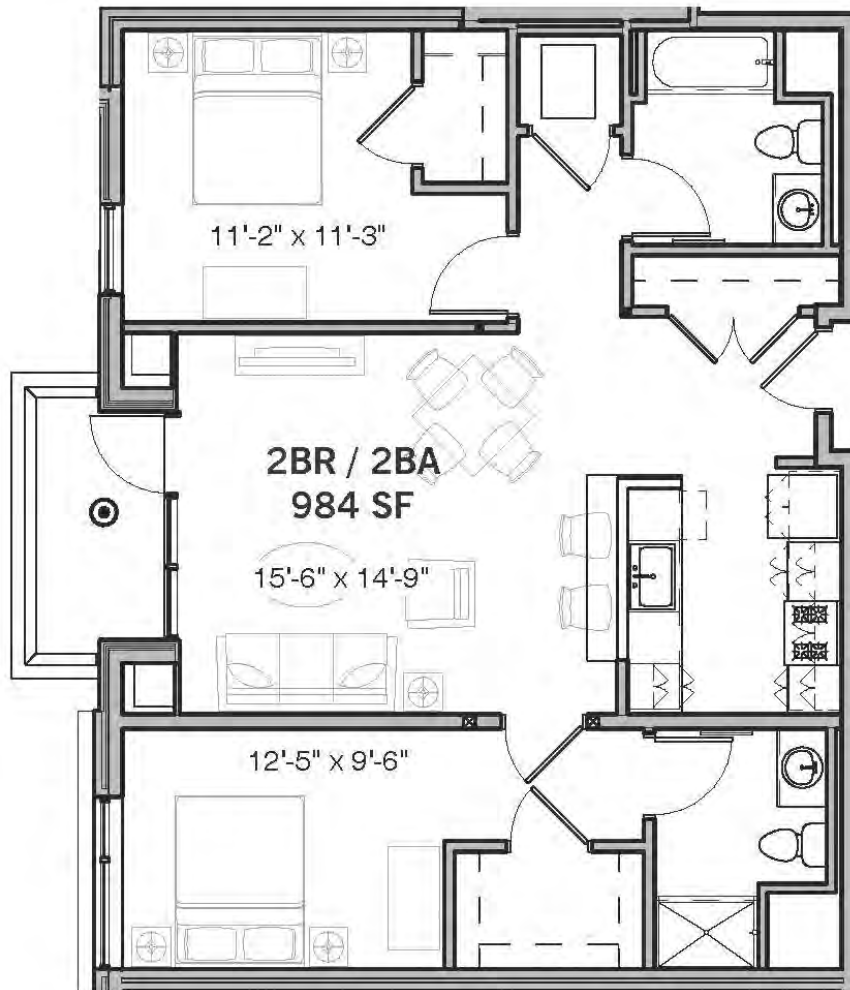


HARBOR PLACE

Residences

2 Bedroom / 2 Bath

Apt. #213 & 413 | +/- 984 sq.ft.



Apartment #: _____

Your Favorite Features: _____

Available Move-In Date: _____

Monthly Rent: _____



Floor plans, square footages and other information are gross, estimated, and approximate for illustrative purposes only - configuration, dimensions, and other information are subject to change without notice. (01.23.17)

Professionally Managed
& Marketed by:

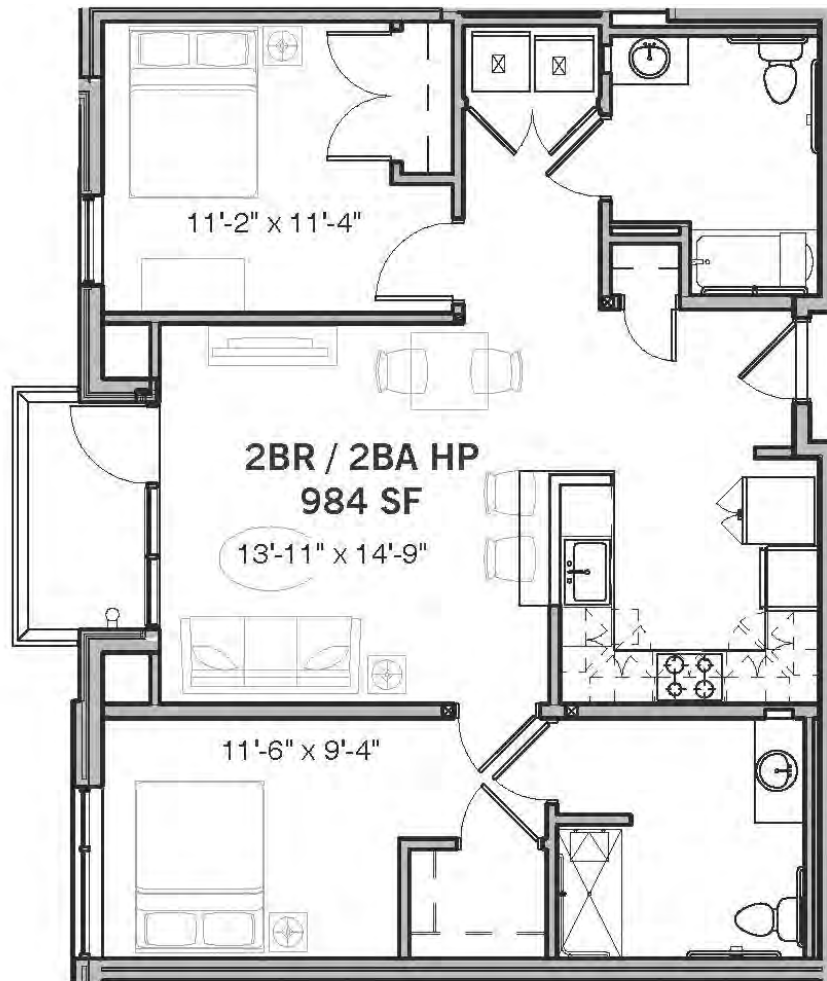


HARBOR PLACE

Residences

2 Bedroom / 2 Bath - HP

Apt. #313 | +/- 984 sq.ft.



Apartment #: _____

Your Favorite Features: _____

Available Move-In Date: _____

Monthly Rent: _____



Floor plans, square footages and other information are gross, estimated, and approximate for illustrative purposes only - configuration, dimensions, and other information are subject to change without notice. (01.23.17)

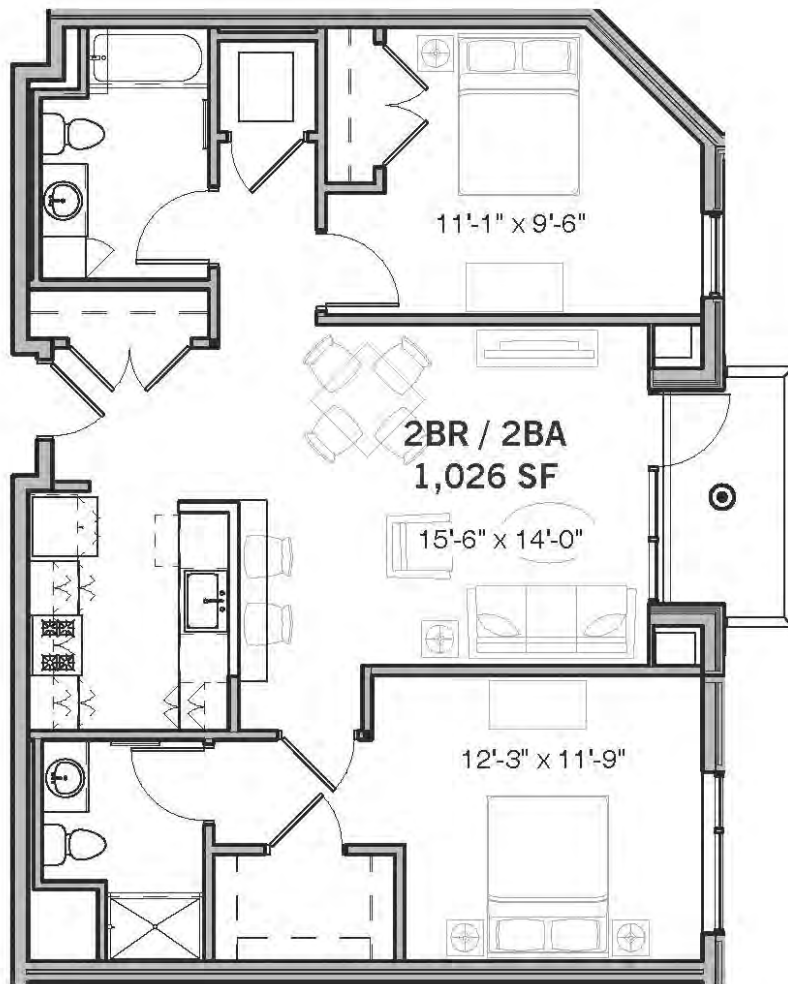
Professionally Managed
& Marketed by:  PEABODY PROPERTIES, INC.

HARBOR PLACE

Residences

2 Bedroom / 2 Bath

Apt. #210, 310, 410, 510 & 610 | +/- 1,026 sq.ft.



Apartment #: _____

Your Favorite Features: _____

Available Move-In Date: _____

Monthly Rent: _____



Floor plans, square footages and other information are gross, estimated, and approximate for illustrative purposes only - configuration, dimensions, and other information are subject to change without notice. (01.23.17)

Professionally Managed
& Marketed by:

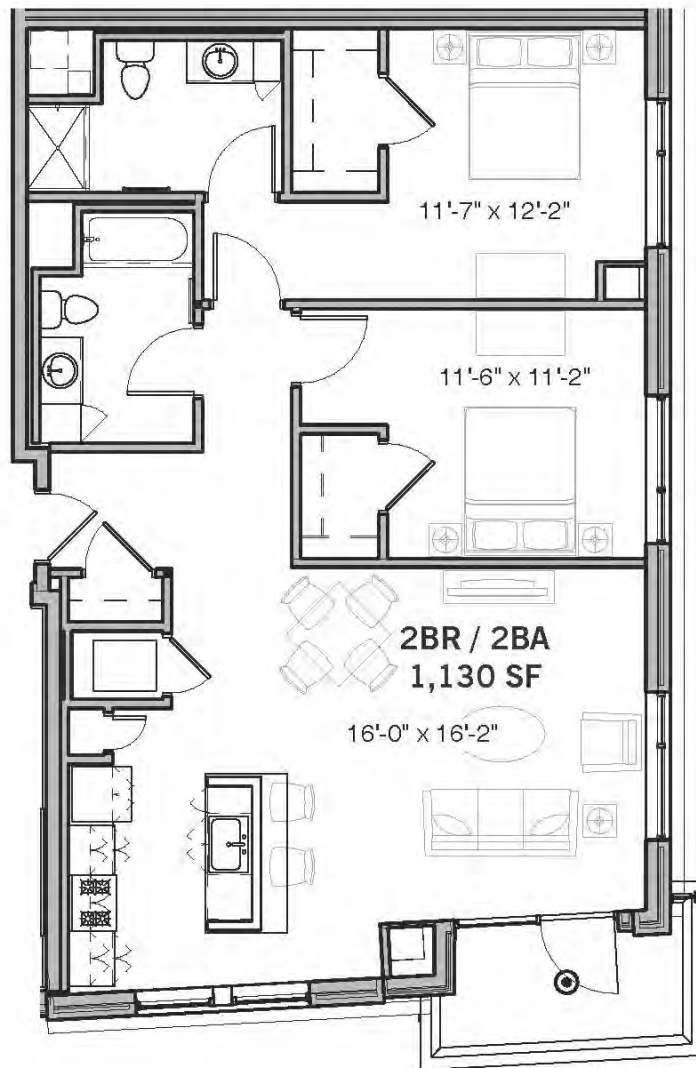


HARBOR PLACE

Residences

2 Bedroom / 2 Bath

Apt. #214, 314, 414, 514 & 614 | +/- 1,130 sq.ft.



Apartment #: _____

Your Favorite Features: _____

Available Move-In Date: _____

Monthly Rent: _____



Floor plans, square footages and other information are gross, estimated, and approximate for illustrative purposes only - configuration, dimensions, and other information are subject to change without notice. (01.23.17)

Professionally Managed
& Marketed by:



HARBOR PLACE

Residences

2 Bedroom / 2 Bath

Apt. #217, 317 & 417 | +/- 1,180 sq.ft.



Apartment #: _____

Your Favorite Features: _____

Available Move-In Date: _____

Monthly Rent: _____



Floor plans, square footages and other information are gross, estimated, and approximate for illustrative purposes only - configuration, dimensions, and other information are subject to change without notice. (01.23.17)

Professionally Managed
& Marketed by: PEABODY PROPERTIES, INC.

HARBOR PLACE

Residences

3 Bedroom / 2 Bath - HP

Apt. #515 | +/- 1,300 sq.ft.



Apartment #: _____

Your Favorite Features: _____

Available Move-In Date: _____

Monthly Rent: _____



Floor plans, square footages and other information are gross, estimated, and approximate for illustrative purposes only - configuration, dimensions, and other information are subject to change without notice. (01.23.17)

Professionally Managed
& Marketed by:



HARBOR PLACE

Residences

3 Bedroom / 2 Bath

Apt. #615 | +/- 1,303 sq.ft.



Apartment #: _____

Your Favorite Features: _____

Available Move-In Date: _____

Monthly Rent: _____



Floor plans, square footages and other information are gross, estimated, and approximate for illustrative purposes only - configuration, dimensions, and other information are subject to change without notice. (01.23.17)

Professionally Managed
& Marketed by: PEABODY PROPERTIES, INC.